

Creating an AutoCAD .plt file for sending plots to Rose City Blueprint



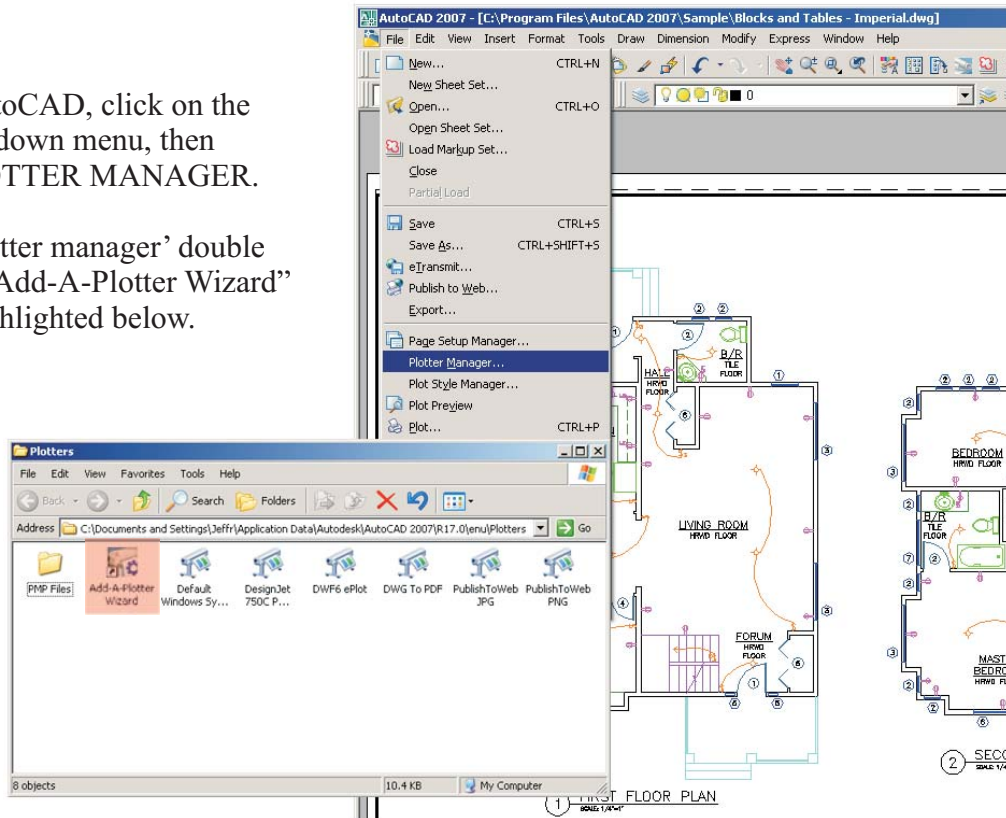
*Rose City Blueprint
and Supply Co., Inc.*

Setting up the Plot Driver

Before we can plot to a file, we must first set up the plot driver in AutoCAD. The driver only needs to be set up once and will be available within AutoCAD's plotter manager when needed. Once the driver is configured, follow the instructions on "Plotting to a .plt file".

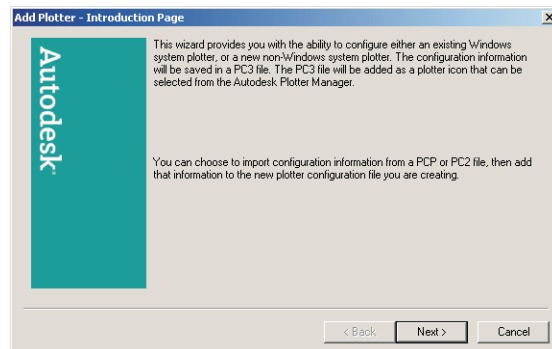
1. Within AutoCAD, click on the FILE pull down menu, then select PLOTTER MANAGER.

Under 'plotter manager' double click the "Add-A-Plotter Wizard" icon as highlighted below.



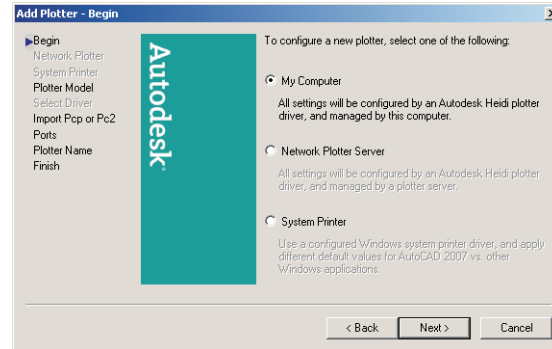
2. The "Add-A-Plotter Introduction Page" comes up.

Click on NEXT



3. Choose MY COMPUTER

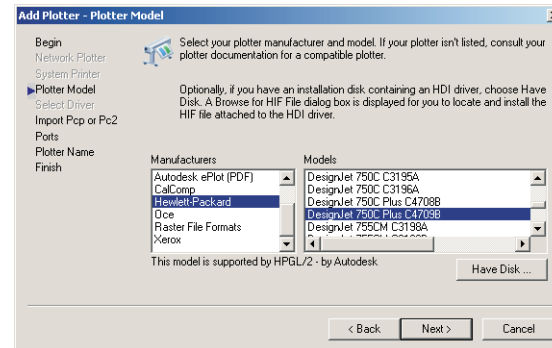
Click on NEXT



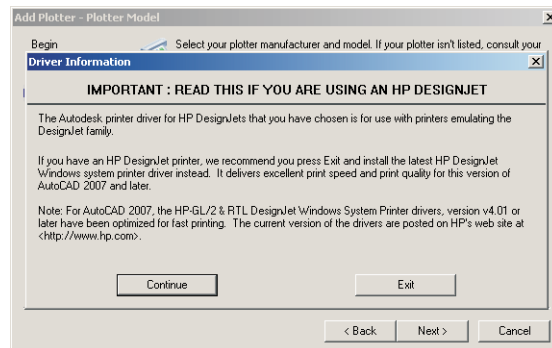
4. Under MANUFACTURES, choose HEWLETT-PACKARD

5. Under MODELS, choose DesignJet 750C Plus C4709B

Click on NEXT

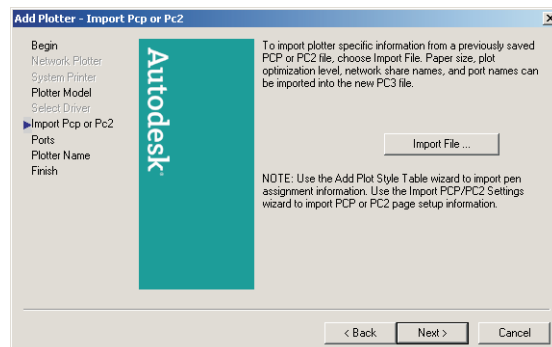


6. Disregard the warning and click CONTINUE



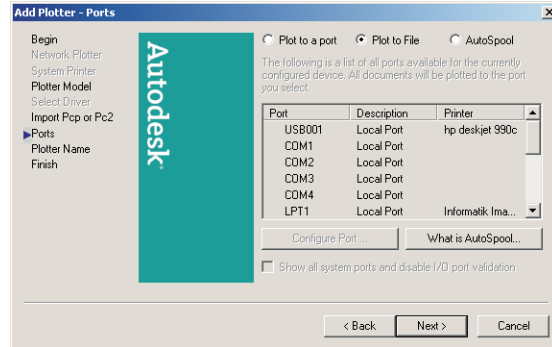
7. You have the option to IMPORT your PCP or PC2 file at this time. If you choose to, click on IMPORT FILE, do so and then click on NEXT

Otherwise, just click on NEXT.



8. Choose PLOT TO FILE

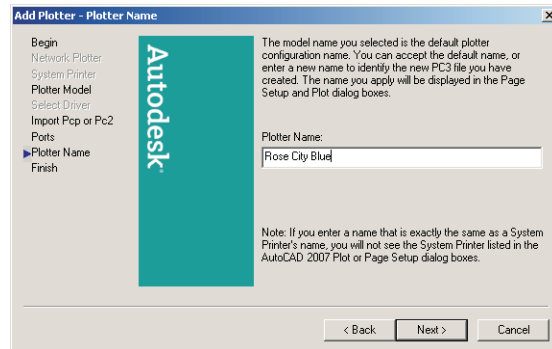
Click on NEXT



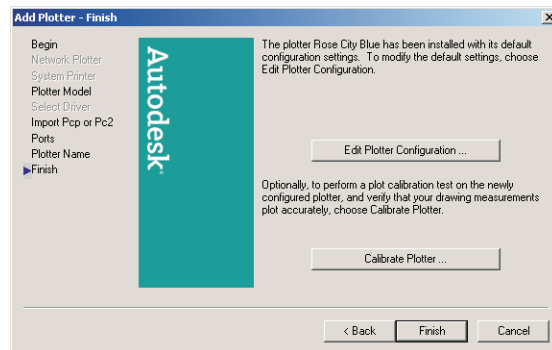
9. Enter a name for your new plotter:

Enter "Rose City Blue"

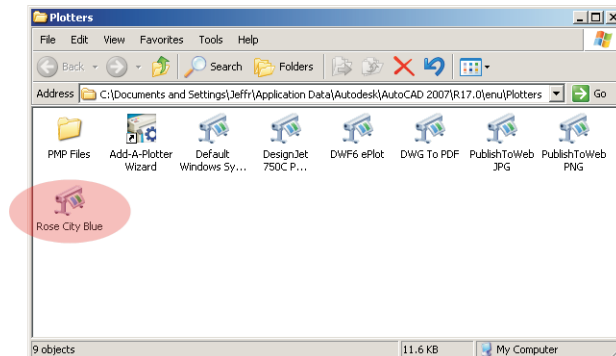
Click NEXT



10. Click on FINISH

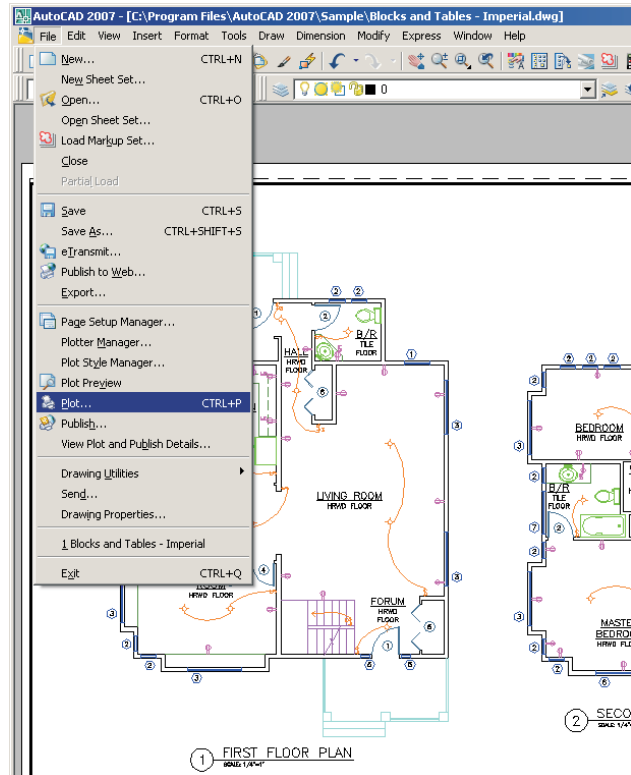


Plot to File Plotter is now available.



Plotting to a .plt File

1. Open the drawing that you want to plot.
2. Click on the FILE pull down menu, and select PLOT.

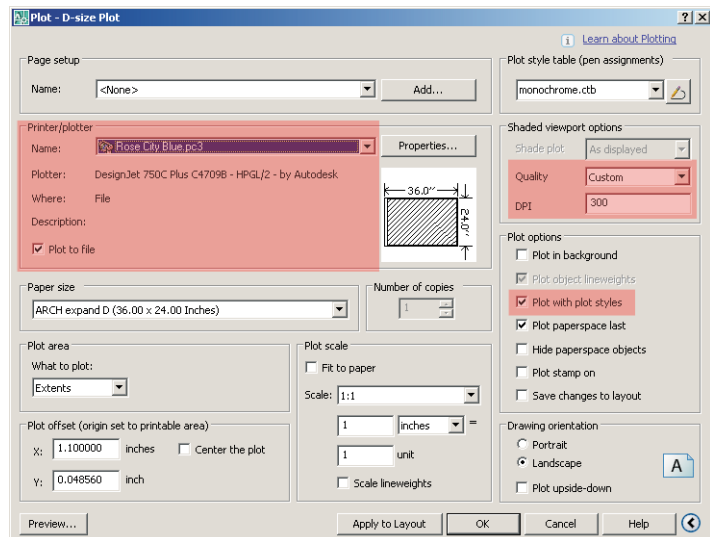


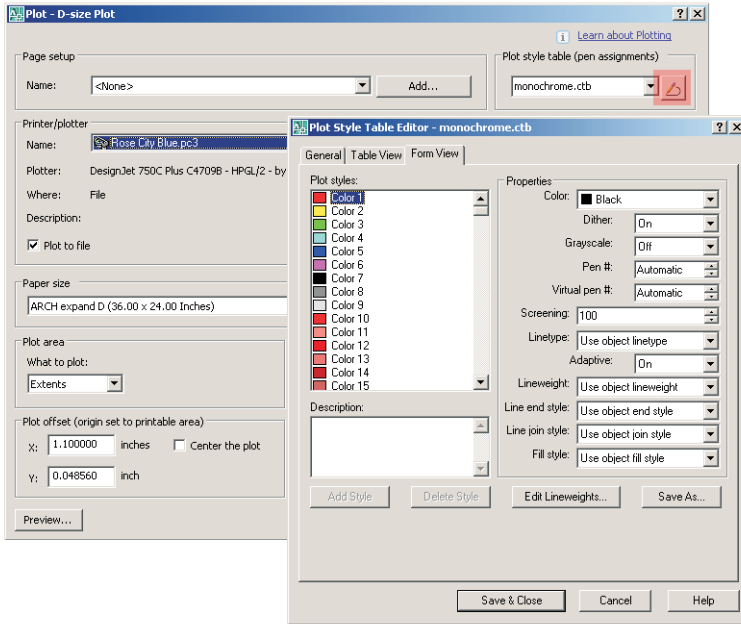
The Plot Dialog Box comes up.

3. Under PRINTER/PLOTTER Choose “Rose City Blue”

Make sure that “Plot to File” and “Plot with Plot Styles” are checked. Also make sure that the DPI is set to the highest setting.

4. Set paper size, scale, plot area, offset and orientation as required.





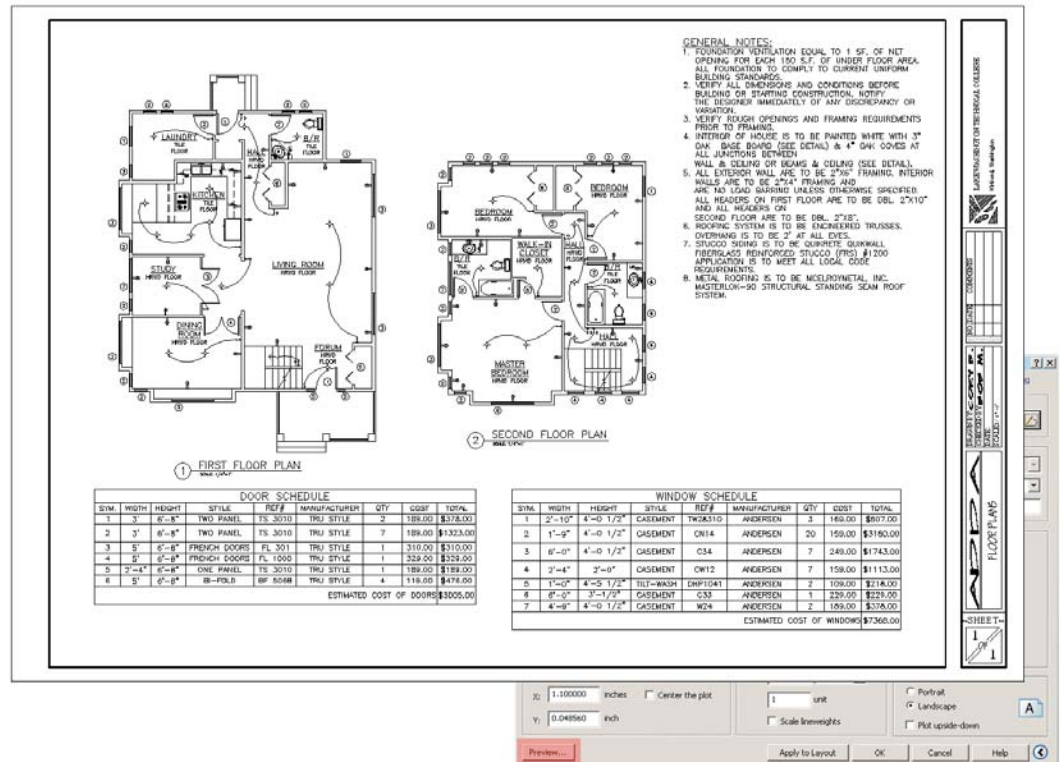
5. Assign a PLOT STYLE TABLE (Pen Assignments) or choose to Edit or Create a new Style Table (.ctb).

For Monochrome...
 Set all Pens to BLACK
 Use screening for Grayscale
 Example: Setting a pen to 50% screening will give a 50% grayscale.
 Set Pen Lineweights as needed.

Note... If you define pen lineweights in your Layer Properties, set line-weight to "Use Object Lineweight" for all pens.

6. Choose PREVIEW to verify that the plot is correct.

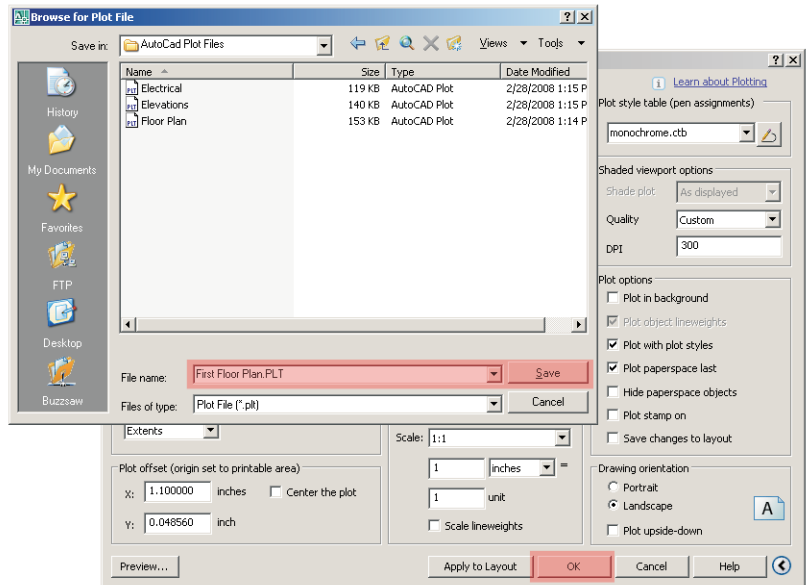
Important Note...
 Always do a plot preview to verify settings.



Rose City Blueprint
 and Supply Co., Inc.

7. Finish the Plot by clicking OK.

Enter a name and destination for the plot file, and then click SAVE.



*** You have now successfully created a Plot file to send to Rose City Blueprint ***

The Plot files will have the lineweights, scale and paper size imbedded into the file and will print exactly as it looked in the plot preview screen.

If you have an questions or problems please feel free to contact us.

Rose City Blueprint & Supply Co., Inc.
Phone (503) 257-7175 Fax (503) 257-0533
e-mail: jeff@rosecityblueprint.com



Rose City Blueprint
and Supply Co., Inc.